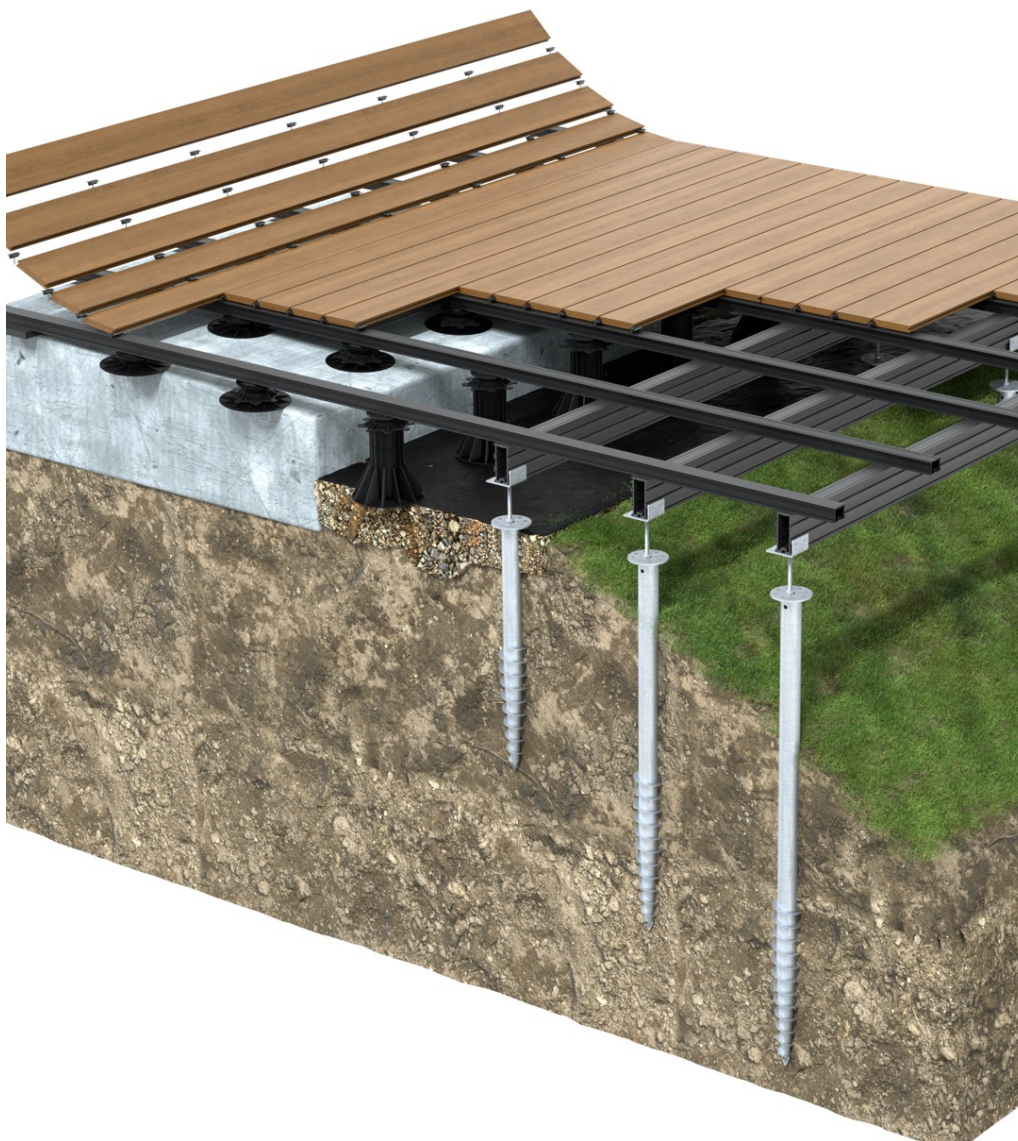




STRUCTURAL® ALUMINUM TERRACE STRUCTURE
A HIGH-PERFORMANCE, VERSATILE AND SUSTAINABLE SOLUTION



A DURABLE & VERSATILE SYSTEM

The STRUCTURAL[®] system gives you a rot-proof **structure that resists moisture and mould perfectly**, for an incomparable lifespan.

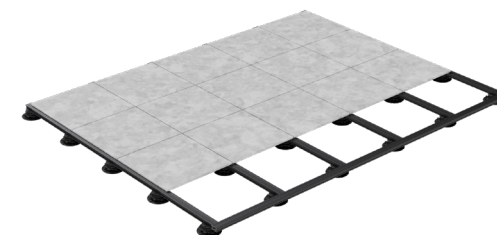
The aluminum joists are suitable for all types of environments and conditions. Unlike wooden structures, aluminum joists are not subject to deformation or aging damages.

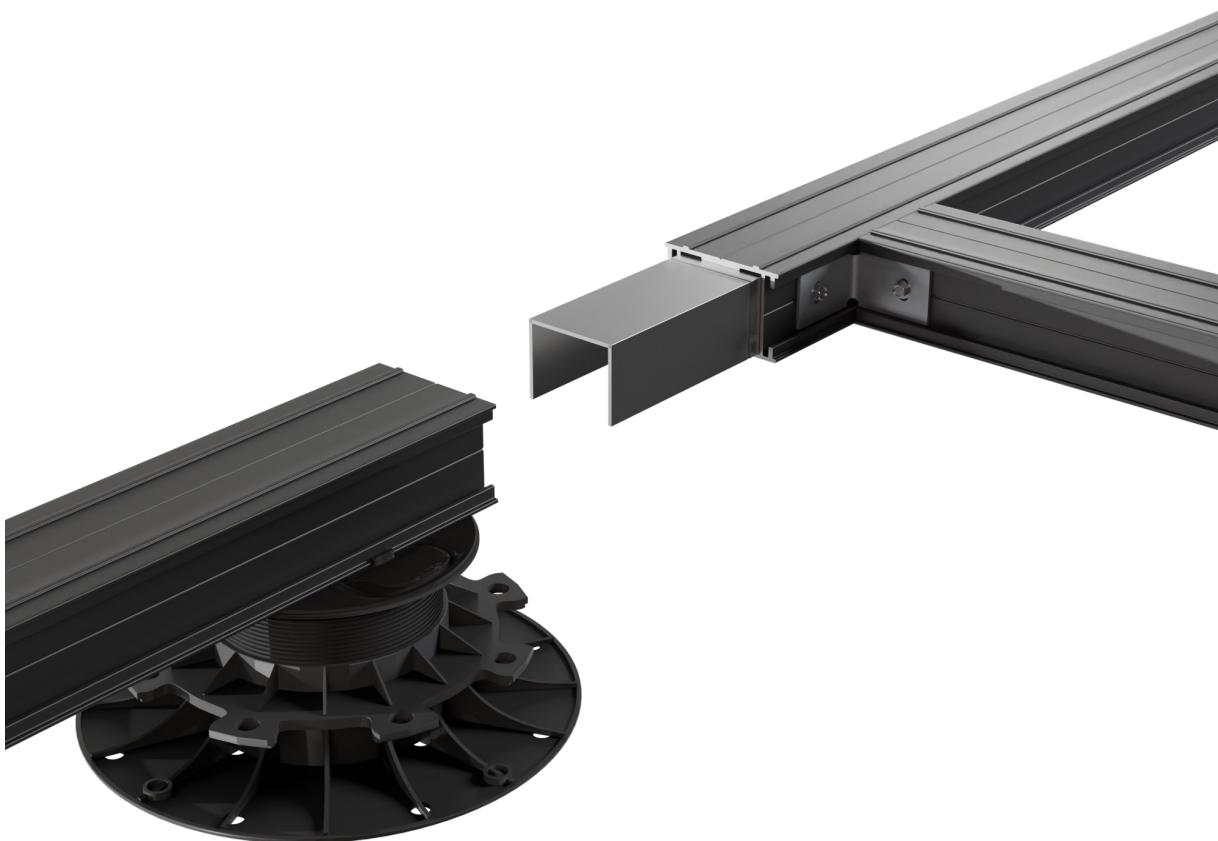
A terrace for life!

The lightweight and high-performance STRUCTURAL joists are load-bearing elements perfectly **adapted for elevated structures** on adjustable pedestals or ground screws.

STRUCTURAL **can be laid on any type of soil or floor**, whether hard, stabilized, loose or waterproof.

Its **modularity** means it can be used to meet a wide range of constraints or needs, from installing **composite or wooden deck boards** to laying **porcelain stoneware slabs**.





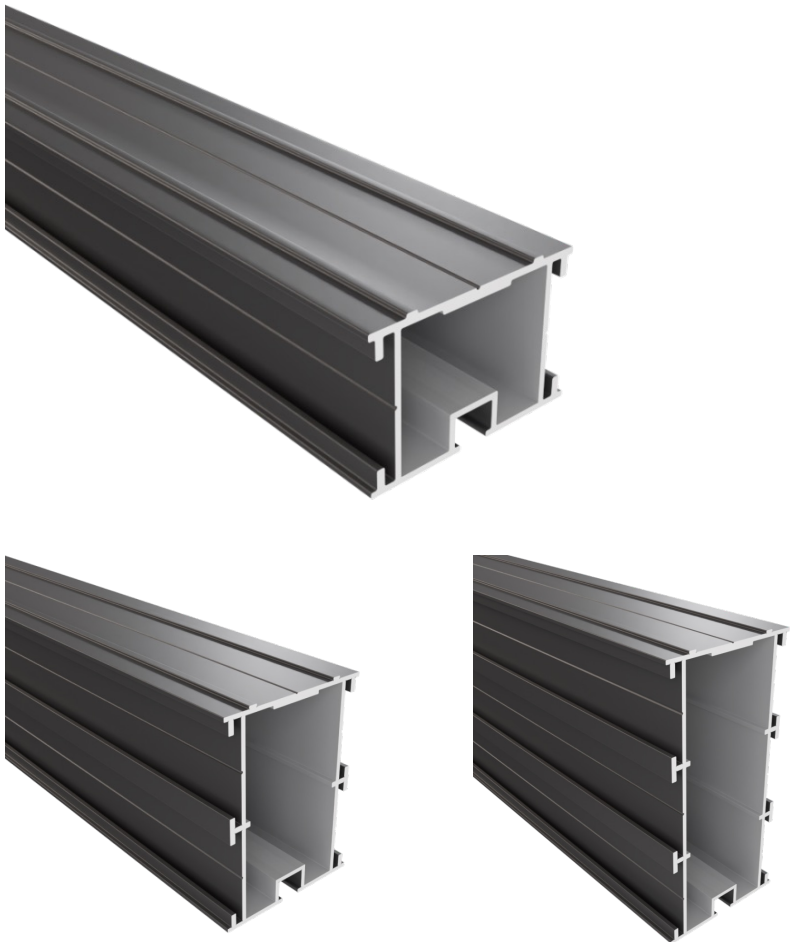
ALL YOU NEED TO KNOW

- Quick and easy assembly
- Modular and dismantable
- Excellent mechanical resistance
- Precision and consistency - Perfectly flat
- Easy to install on elevations and on all types of floor
- Versatile for laying decking or paving slabs
- Rot-proof - Weather and parasites resistant
- Durable - Performance that never fades

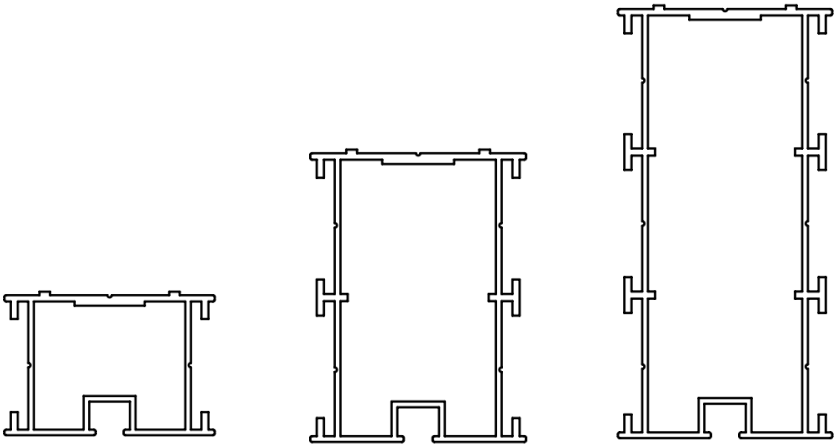
The heart of the **STRUCTURAL®** SYSTEM



ALUMINIUM JOISTS



DESIGN & CHARACTERISTICS

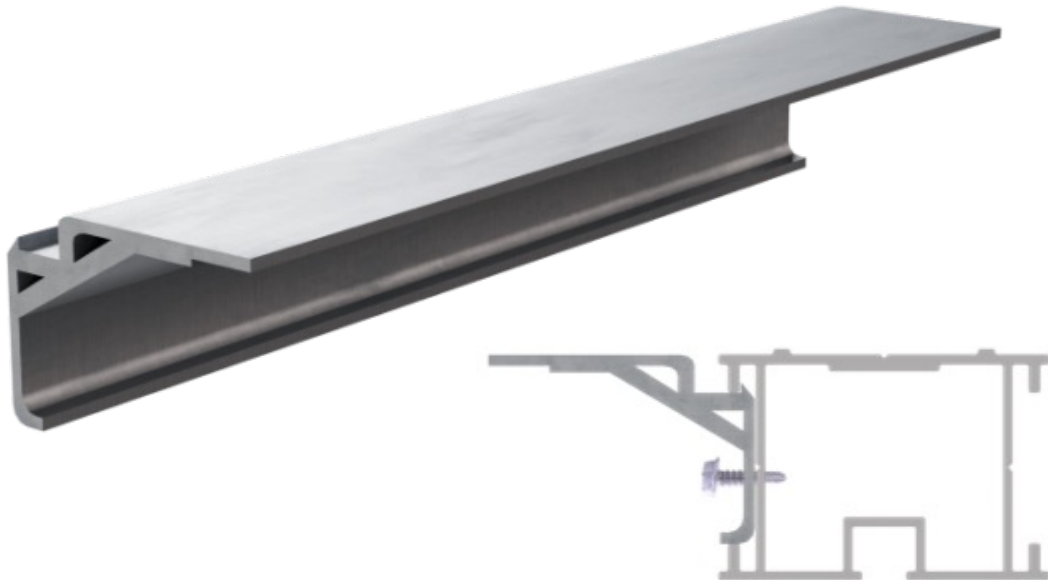


40 x 60 x 2300 mm h x l x L	40 x 60 x 4000 mm h x l x L	80 x 60 x 4000 mm h x l x L	120 x 60 x 4000 mm h x l x L
FD1900 – NL2853	FD1892 – NL2846	FD1893 – NL2847	FD1894 – NL2848
2,6 kg	4,6 kg	6,9 kg	9,8 kg
1 M	1 M	2 M	3 M
Material Aluminium alloy EN AW 6063 (T5)			
Finish Black lacquer RAL 9005 Matt			
Usage Top side Bottom Side		Laying decking Laying paving	

STRUCTURAL[®] Brackets

JOINTING SQUARE FOR DECK BOARDS (FD1895 – NL2849)

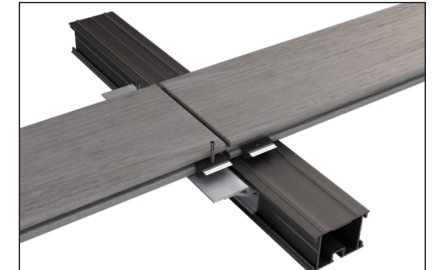
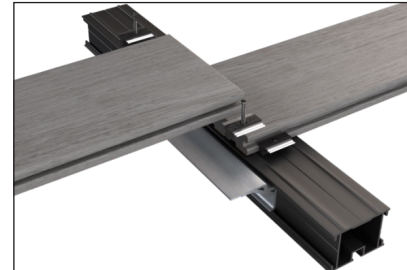
- Allows optimal jointing of deck boards without double joisting.
- 2-metre rail can be cut to size for optimum use depending on the type of installation and the width of the decking to be jointed.
- Hook for easy installation and screwing comfort.
- Compatible for decking with side clips or screws with self-drilling heads for metal.



CUT TO SIZE



CLIPPED DECKING



SCREWED DECKING

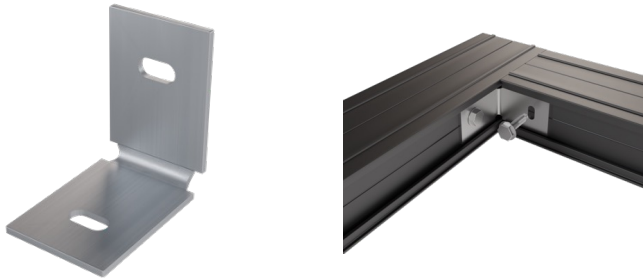


STRUCTURAL® Brackets



FOLDING CORNER BRACKET (FD1898 – NL2854)

- Corner joint between joists
- Pre-drilled and designed for easy screwing
- Foldable to adapt to the geometry of the structure



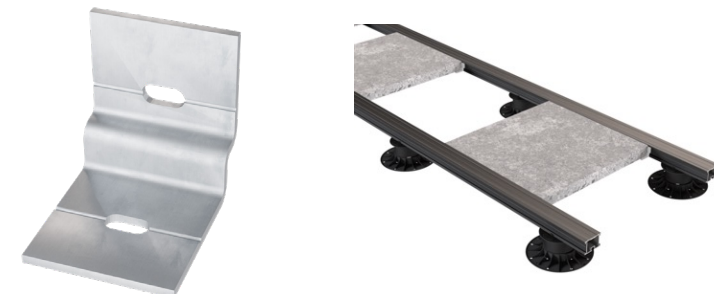
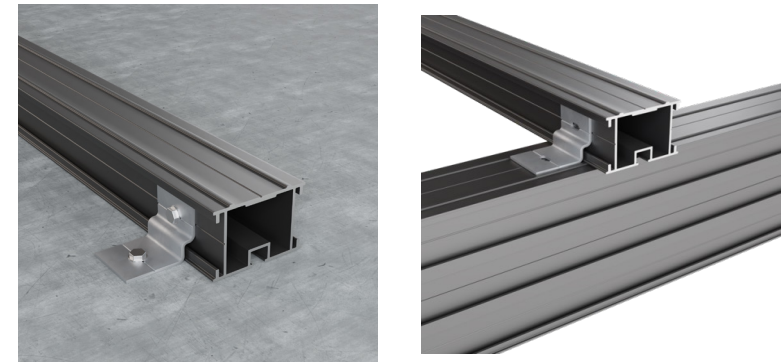
90° FLAT SQUARE (FD1899 – NL2861)

- Allows vertical elements to be installed
- Ideal for creating steps
- Pre-drilled for easy screwing



FIXING SQUARE (FD1897 – NL2862)

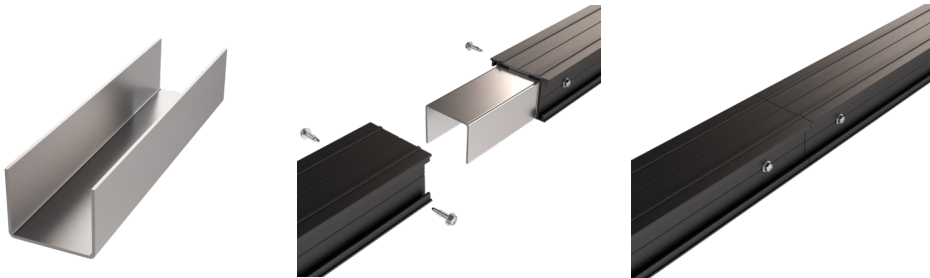
- Fixed into the ground or for double joisting
- Pre-drilled and designed for easy installation and wedging
- Allows ballast to be laid with structures not fixed to a watertight floor



STRUCTURAL[®] accessories

BUTTING SLEEVE FOR JOISTS (FD1896 – NL2852)

- Allows joists connection
- Compatible with all 3 joist sections
- 18 cm long with practical marking indicating the middle



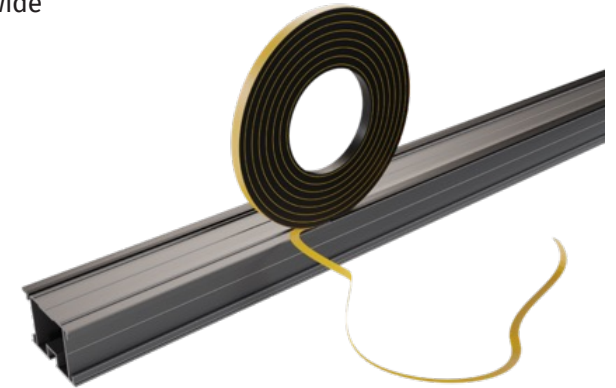
SELF-DRILLING STAINLESS STEEL SCREW (FD1903 – NL2863)

- AISI 410 stainless steel screws, 16 mm long with hexagonal head
- Drilling capacity in aluminium: 5 mm
- Box of 100 pcs - Single screw for all brackets and accessories



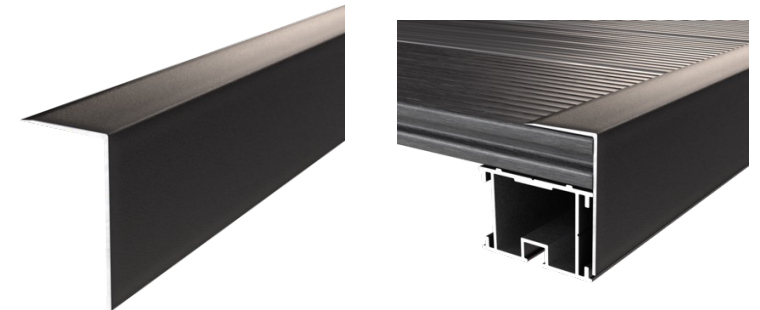
EPDM TAPE (FD0939 – NL2389)

- Self-adhesive strips
- 5 mm thick - 10 mm wide
- 2 x 10 linear metres

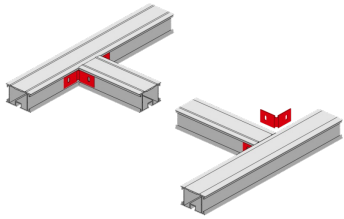


FINISHING PROFILE (FD1938 – NL2867)

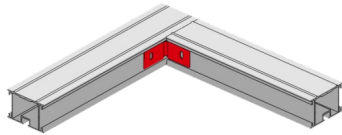
- l 35 x h 60 mm - Length 2 m
- Matt black lacquer RAL 9005



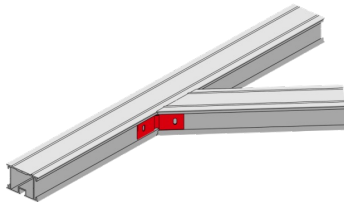
STRUCTURAL ACCESSORIES ON JOISTS 40X60



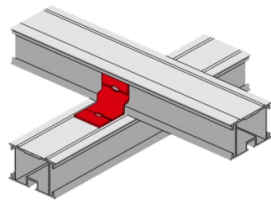
FD1898-NL2854



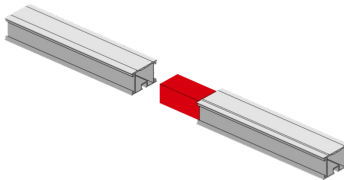
FD1898-NL2854



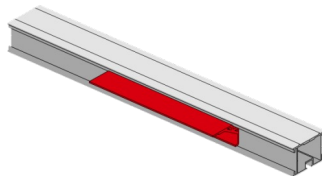
FD1898-NL2854



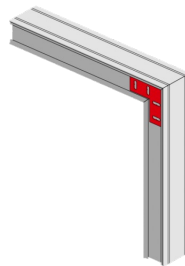
FD1897-NL2862



FD1896-NL2852



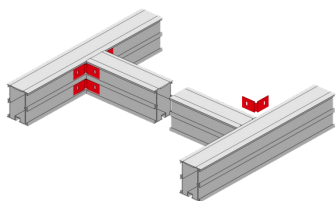
FD1895-NL2849



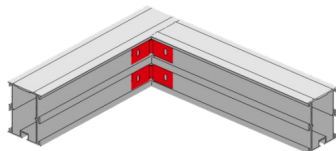
FD1899-NL2861



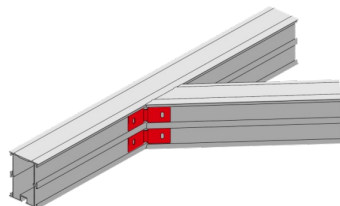
STRUCTURAL ACCESSORIES ON JOISTS 80X60



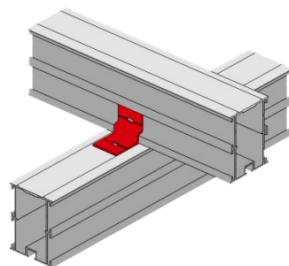
FD1898-NL2854



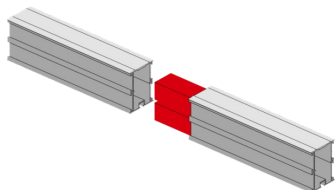
FD1898-NL2854



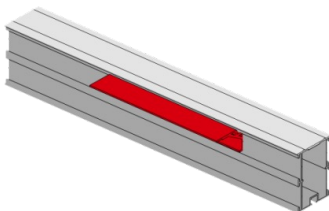
FD1898-NL2854



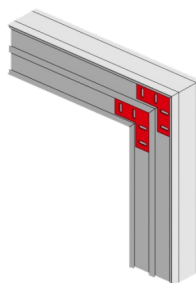
FD1897-NL2862



FD1896-NL2852



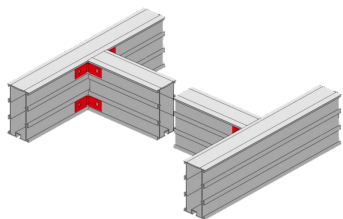
FD1895-NL2849



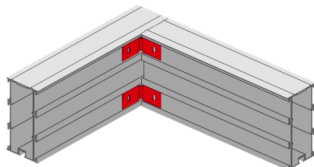
FD1899-NL2861



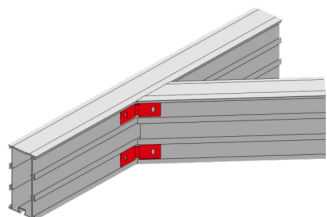
STRUCTURAL ACCESSORIES ON JOISTS 120X60



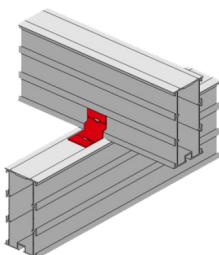
FD1898-NL2854



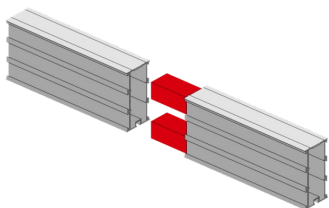
FD1898-NL2854



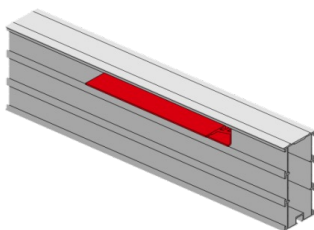
FD1898-NL2854



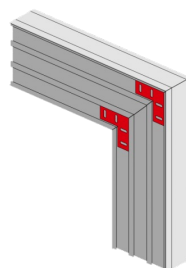
FD1897-NL2862



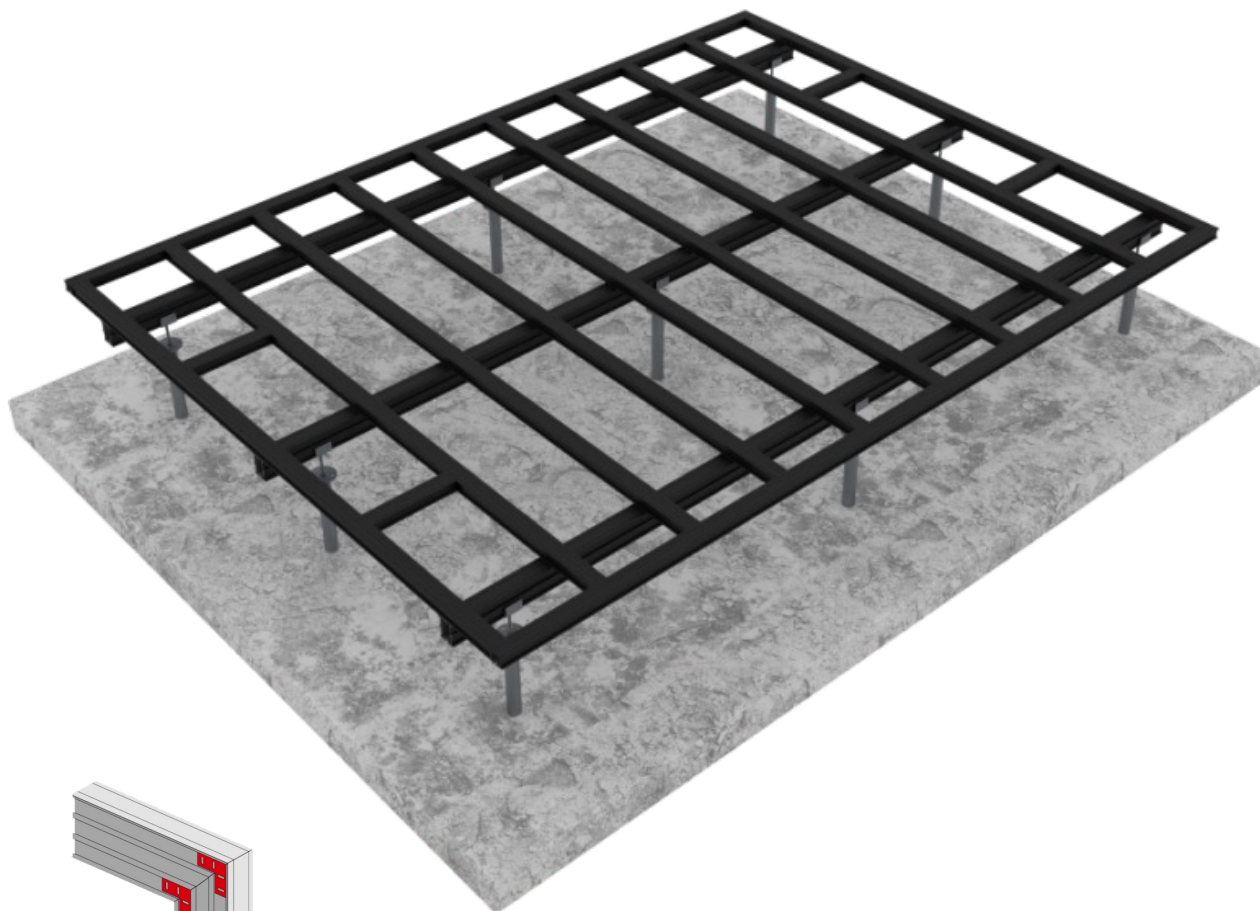
FD1896-NL2852



FD1895-NL2849



FD1899-NL2861



FASTENERS FOR DECKING ON **STRUCTURAL®**



COBRA HYBRID CLIPS

- Hybrid 8-25 for laying hardwood (FD0984-NL2662)
- Hybrid 7-22 for laying bamboo or thermo wood (FD1334-NL2661)
- Hybrid 8-18 for laying composite (FD0993-NL2174)



AIR SPACER (FD1040 – NL2619)

- Ensures ventilation between boards and joists
- Compatible with Cobra Hybrid clips and standard screws
- Recycled polyamide: UV, heat and frost resistant



PROFILE DRAWN FOR EASY INSTALLATION

- 2 guides to position the Hybrid clips and Air spacer perfectly
- 1 central drilling groove
- 3 mm d'aluminium wall for a firm grip on screws
- 2 side spaces to suit EPDM strips sticking



STAINLESS STEEL SCREW FOR JOISTS

- Selfdrilling point for wood and aluminium
- Deep TORX print
- Sizes to suit different decking thicknesses



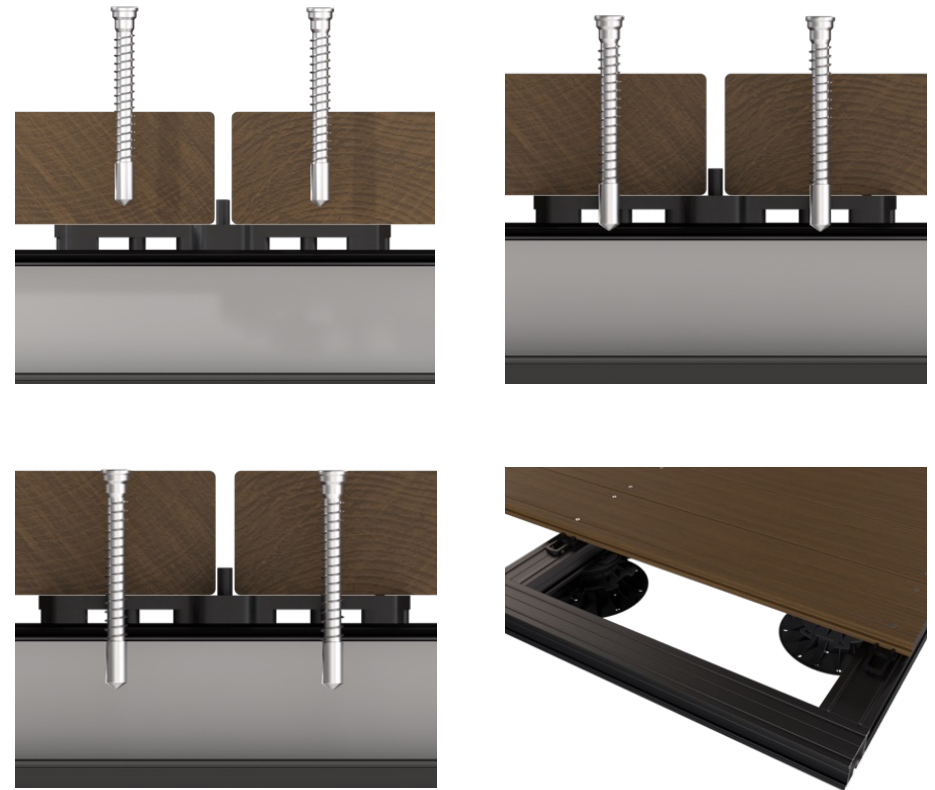
DECKING INSTALLATION WITH CLIPS OR SCREWS + **AIR SPACER ON STRUCTURAL**®



CLIPPED DECKING



SCREWED DECKING



STRUCTURAL® ON PEDESTALS



AL60 HEAD CAP FOR NIVO PEDESTALS (FD1357 – NL)

- Clipping disc for 60 mm joist to be placed on the NIVO tile block



NIVO + PEDESTALS HEAD (FD1810 – NL)

- NIVO + clipping disc for 60 mm aluminum joist



EASY, FAST AND APPROPRIATE

- Simple clip-on installation and removal of joists.
- STRUCTURAL offers a span of 1 to 3 metres between supports, depending on the cross-section of the joist.
- Thanks to STRUCTURAL, the perimeter pedestals can be hidden by being positioned on inside parts of an adapted frame. Ideal for the deck finishing

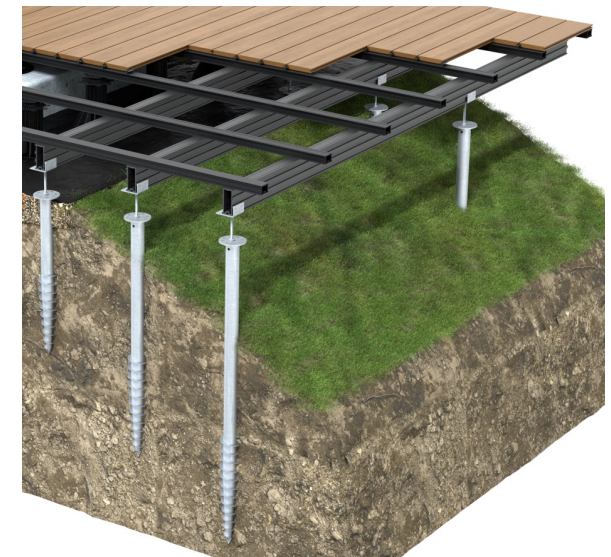


STRUCTURAL® ON FOUNDATION SCREWS



AN ALTERNATIVE THAT MEETS LEVEL & GROUND CONSTRAINTS

- STRUCTURAL joist allow double joisting building for installation on foundations screws
- Fixed on the adjustable head of the foundation screw
- Connection between joist and beams with the STRUCTURAL fixing bracket
- The system offers exceptional spans and overhangs

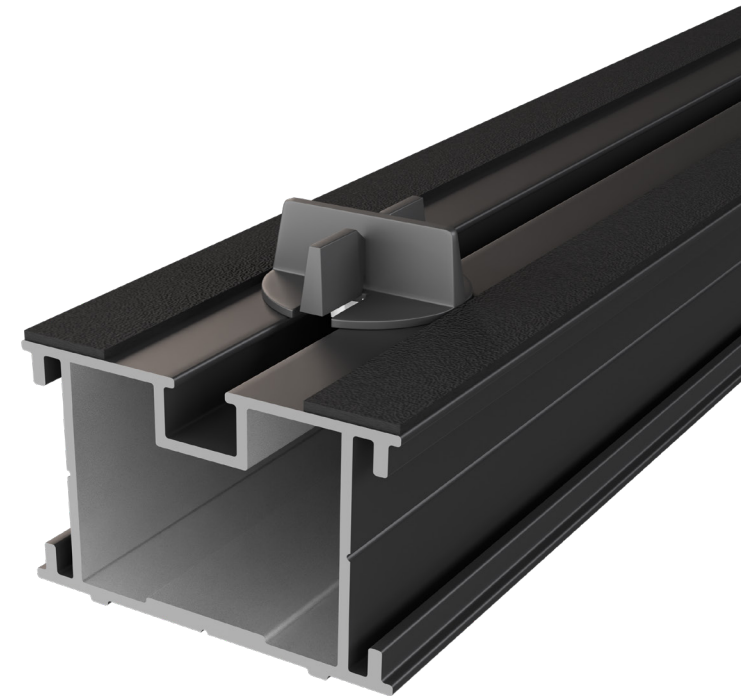


Maximum spans	Beams sections			Overhang
	60x40	60x80	60x120	
Joist 60x40	0,85 m	1,30 m	1,80 m	15 à 18,5 cm
Joist 60x80	X	1,15 m	1,45 m	30 à 41 cm
Joist 60x120	X	X	1,30 m	50 à 65 cm

LAYING CERAMIC PAVING ON STRUCTURAL[®] AN IDEAL, EASY-TO-USE STRUCTURE



- Laying the paving on a joist frame ensures optimum adjustment and levelling.
- The divisible crosspieces fit onto the joist and slide for easy, precise laying of the paving.
- EPM[®] bands are easy to stick on and provide noise comfort and cushioning
- This modular load-bearing structure allows for multiple geometries and facilitates the creation of the finishing elements

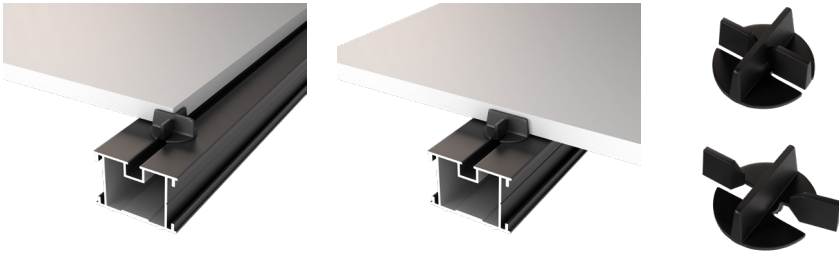


Accessories **STRUCTURAL®** paving



PAVING BRACE (FD0866 – NL2416)

- For laying and levelling paving slabs
- Slides easily into the groove of the joist
- Strippable to adapt to installation conditions (wall, rectangular formats, etc.)



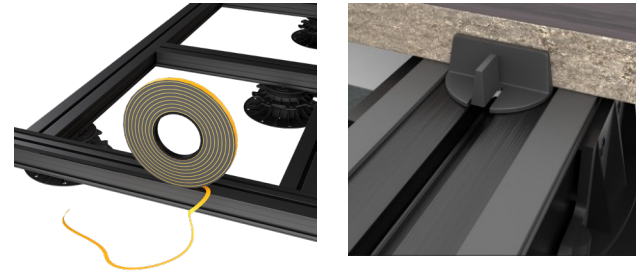
HOOKS FOR SKIRTING BOARDS (FD0864 – NL2418)

- Top and bottom supports for ceramic skirting boards
- Easily fixed to the joist structure
- Suitable for 20 mm tiles



SELF-ADHESIVE EPDM STRIP (FD0939 – NL2389)

- 5 mm thick - 10 mm wide
- 2 x 10 linear metres
- Provide cushioning and sound comfort



ALUMINIUM FINSHING PROFILE (FD0867 – NL)

- Combined with the skirting hooks on top of 20 mm thick tiles
- Length 1,14 m, thickness 2 mm
- Perfect finish

